

Handwritten text at the top of the page, possibly a title or introductory notes.

Handwritten text in the top right corner, possibly a date or page number.

Handwritten text below the title, possibly a subtitle or section header.

Figure 1



Main body of handwritten text on the right side of the page, written in a cursive script.

Figure 2



Handwritten text below the main body, possibly a section header.

Handwritten text below the previous section, possibly a date or reference.



Figure 3



Figure 4



Figure 5



Figure 6



Handwritten text in red ink, possibly a legend or key for the diagram.

- 1. ...
- 2. ...
- 3. ...
- 4. ...
- 5. ...
- 6. ...



Handwritten text at the bottom right of the page.

Representing an existing house, and showing the
 proposed alterations, and the
 proposed new wing.

Front - N



Front - S



Front - W



Front - E



Plan



Front - N



Front - S



Front - W



Front - E



Front - S



Geometry

1. The area of a square is equal to the square of its side.

2. The area of a rectangle is equal to the product of its base and height.

3. The area of a parallelogram is equal to the product of its base and height.

4. The area of a triangle is equal to half the product of its base and height.

5. The area of a trapezoid is equal to half the product of its parallel sides and the distance between them.

6. The area of a circle is equal to the product of its radius and its circumference.

7. The area of a sector of a circle is equal to half the product of its radius and its arc length.

8. The area of a square is equal to the square of its side.

9. The area of a rectangle is equal to the product of its base and height.



Area of a Square

- 1. The area of a square is equal to the square of its side.*
- 2. The area of a square is equal to the square of its side.*
- 3. The area of a square is equal to the square of its side.*
- 4. The area of a square is equal to the square of its side.*
- 5. The area of a square is equal to the square of its side.*
- 6. The area of a square is equal to the square of its side.*

Figure 1



Figure 2



Figure 3



Figure 4



Figure 5



Figure 6



Paper plan of a house 20 feet wide & 20 feet deep
as a model for a house of 20 feet wide & 20 feet deep
as a model for a house of 20 feet wide & 20 feet deep.

Measurements

- 1. Total length of the house 20 feet
- 2. Total width of the house 20 feet
- 3. Total height of the house 20 feet

Figure 7



Figure 8

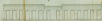


Figure 9



Figure 10



Handwritten notes at the bottom left of the page, possibly describing the drawings or providing additional measurements.

Handwritten notes at the bottom right of the page, including a signature and possibly a date or reference number.

